

Thermowell

solid machined type TW15-H
for dial-thermometer

E 11.01.02

Ed.17.01

Application	Thermowell per international standard for process-industry with high process loads. Suitable for high static pressure, high temperatures and vibrations
Type	TW15-H
Material	Stainless steel 304/304 L Stainless steel 316/316L Stainless steel 1.4571 Super Duplex 1.4410 Hastelloy C4 (2.4610) Hastelloy C276 (2.4819) Monel 400 (2.4360) Titan Grade 2 (3.7035)
Design	Solid machined type, tapered
Connection instrument	Female connection G1/2 or 1/2"NPT
Connection process	Male connection 1/2"NPT, 3/4"NPT or 1"NPT
Inside diameter	Inside bore size dim \varnothing 6,6 - 8,6 or 10,5 mm suitable for stem diameter dim \varnothing 6, 8 or 10 mm
Insertion length	U = 75, 100, 150, 200, 250 or 300 mm
Connection length	H = 45 mm
Total length	U + H measurement
Process pressure	Max 150 bar ¹⁾
Process temperature	Max 600°C ¹⁾
Special	Other U-measurement Material certificate 3.1 B Engraving TAG-nr



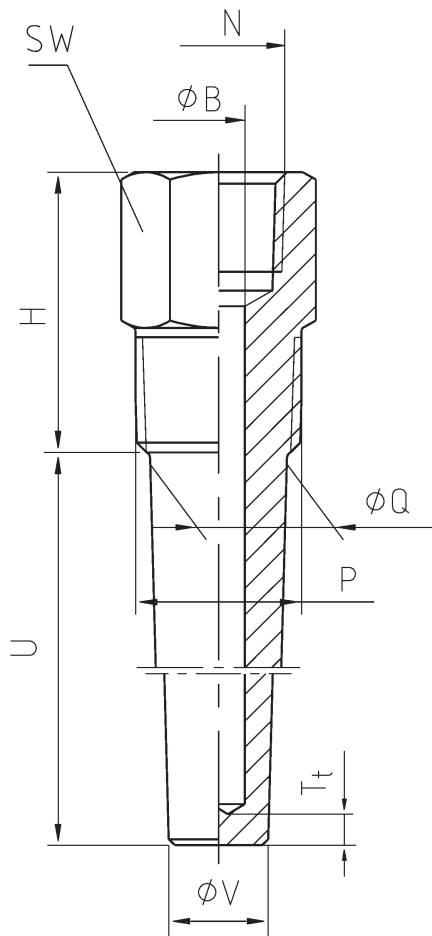
1) Maximum process pressure and temperature

Ratings depends on process medium, process pressure, process temperature, flow rate, vibrations, insertion length, material and dimension

Thermowell

solid machined type TW15-H
for dial-thermometer

E 11.01.02



- P Process connection
- N Instrument connection
- SW Across flats
- Ø B Bore size
- H Connection length
- U Insertion length
- Ø Q Root diameter of thermowell
- Ø V Tip diameter of thermowell

Insertion length on stem

Insertion length on stem of the thermometer included connection = L1 shall be more than 45 mm longer than U-measurement of the thermowell
Example: Thermowell with U=150mm used with thermometer L1=195 mm

N	P	Ø B	Ø Q	Ø V	H	kg
G1/2"	1/2"NPT	6,6	16	13	45	0,2-0,4
		8,5	16	13	45	0,2-0,4
	3/4"NPT	6,6	22	16	45	0,3-0,6
		8,5	22	16	45	0,3-0,6
	1"NPT	6,6	27	16	45	0,5-0,9
		8,5	27	16	45	0,5-0,9

N	P	Ø B	Ø Q	Ø V	H	kg
1/2"NPT	1/2"NPT	6,6	16	13	45	0,2-0,4
		8,5	16	13	45	0,2-0,4
	3/4"NPT	6,6	22	16	45	0,3-0,6
		8,5	22	16	45	0,3-0,6
	1"NPT	6,6	27	16	45	0,5-0,9
		8,5	27	16	45	0,5-0,9